

Installing and using a USB port authorization device -

Prior to using the USB authorization device, you must install the driver for the device.

Do NOT attempt to load the driver prior to reading these instructions.

This driver is suitable for the following operating systems:

server2008 (32 & 64 bits) & server 2008 R2 (32 & 64 bits)

server 2012 and 2012 R2 (32 & 64 bits)

server 2016

server 2019

Windows 7 (32 & 64 bits)

Windows 8 et 8.1 (32 & 64 bits)

Windows 10

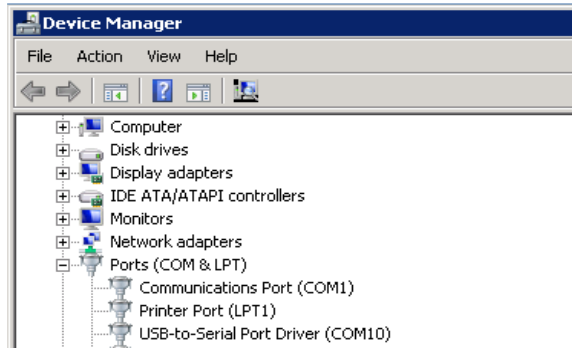
For 64 bit OS, download the drivers from http://can8.com/download/usb_drivers_64.zip

For 32 bit OS, download http://can8.com/download/usb_drivers.zip

Installation procedure

1. Download and unzip the driver
2. Locate the driver's installation file:
 ..\USB-drivers\drivers\Version_1.9.7.1\Win32\setup.exe for 32 bits OS
 or
 ..\USB-drivers\drivers\Version_1.9.9.0\Win64\setup.exe for 64 bits OS.
3. Right click on this file and select **Run as administrator**
4. Follow the installation assistant. When the installation is done, it will prompt you to remove and re-insert the dongle.
5. No reboot from the system is required.
6. Check your device manager to determine if the driver is installed correctly.

You should see the entry **USB-to-serial Port Driver (COMx)** as illustrated below



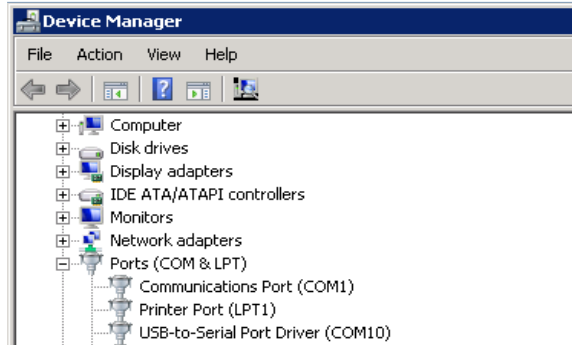
If this entry is not found, and you have a new device under USB ports followed by a !, try this procedure again or follow the [Alternative Method](#) below.

7. To test the installation of the drivers, go to the ["Testing the Installation"](#) section below.

[Alternative method](#)

1. Insert the security device into an available USB port on the host machine.
2. Wait for the *"Found New Hardware Wizard"* to appear on the screen
3. Choose **"Install from a list or specific location"**. Press **Next**.
4. Choose **"Search for the best driver..."** Select **"Include this location in search"** and enter the directory path used in step 1). Press **Next**.
5. The system will search for the driver. It may display a warning message that the driver is not digitally signed by Microsoft. Click **"Continue Anyway"** to proceed.
6. The first part of the driver installation will complete installing.
After clicking **Finish**, wait for a few seconds; the system will display the second installation assistant for the second part of the driver.
The assistant will prompt you to install a **"MosChip USB serial Port"**.
7. As before, select **"install from a list of specific location"** and click **Next**.
8. Use the same directory path as in step 1. and click **Next**.
9. The system will again display the message about the driver not being signed by Microsoft. Click **"Continue Anyway"** to install the driver.

10. Select **Finish**. The driver is now fully installed. Check your device manager to determine which serial port number the system has allocated to the security device.



Do not however attempt to adjust the serial port number of the device. When the system re-boots, it will re-allocate it anyway.

Test your installation.

If you are performing a new installation of CAN-8, run the can8inst.exe file first to install the server software. If you already have an existing CAN-8 installation or if you are migrating your CAN-8 system, proceed to step 2. **Never run the can8inst.exe on an existing installation.**

1. Install the LICENSE file in the \SVSYS\ID directory for the CAN-8 server.
2. Run the file SVSYS\ntcheck.exe
3. You should receive a “check passed” window with 2 matching numbers for the license file and the authorization device. This confirms the driver’s installation is complete and successful. Start the NTSERVE.EXE program as usual.
4. If you receive a “check failed” message, and the authorization device number is “0”, the drivers are not installed properly.
5. go to CONTROL PANNEL --> ADD/REMOVE PROGRAMS and remove the "MosChip USB compound device". Then proceed again from step 1.
6. For technical assistance, contact cenriquez@sounds.com.

Sounds Virtual Inc
920 Yonge Street, Suite 801
Toronto Ont. M4W 3C7
support@can8.com

December 2020
