

Sounds Virtual Inc.

PO Box 40033 | RPO Dupont | Toronto, On | M5R 0A2 | Canada
support@can8.com

Installing CAN-8 as a Service

These instructions apply to the following OS:

Windows server 2003, Windows server 2008 & 2008 R2, Windows server 2012 & 2012 R2, Windows 2016, Windows 2019 and Windows 2022

Before you start

The following instructions assume that the CAN-8 application is operating in the C:\SVSYS folder. If this is not the case please modify these instructions accordingly.

To install CAN-8 as a service, the following files will be required:

- [SRVANY.EXE](#)
- [INSTSRV.EXE](#)

For your convenience, we bundled them in the “FILES” folder included in this distribution package:

1. Create a folder in the **C:\windows** folder and name it “TOOLS” (i.e. C:\WINDOWS\TOOLS\)
2. Place both files in this folder.

STEP 1: Create the service.

1. Start a command prompt and change to the directory
C:\windows\tools

If you are using Windows server 2008, Windows server 2012 or any operating system more recent than these, make sure to right click on the command prompt icon and select “*Run As Administrator*”.

2. Type the following line to create the CAN8srv Service:

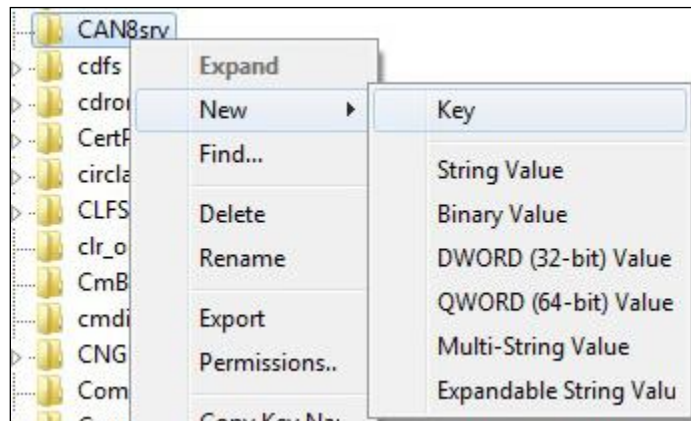
```
instsrv CAN8srv c:\windows\tools\srvany.exe
```

```
Administrator: C:\Windows\system32\cmd.exe
C:\Windows>cd tools
C:\Windows\tools>instsrv CAN8srv C:\windows\tools\svany.exe
The service was successfully added!
Make sure that you go into the Control Panel and the Services applet to change the Account Name and Password that this newly installed service will use for its Security Context.
C:\Windows\tools>
```

3. Once Windows NT has reported that the service has been successfully created, the parameters will need to be modified.

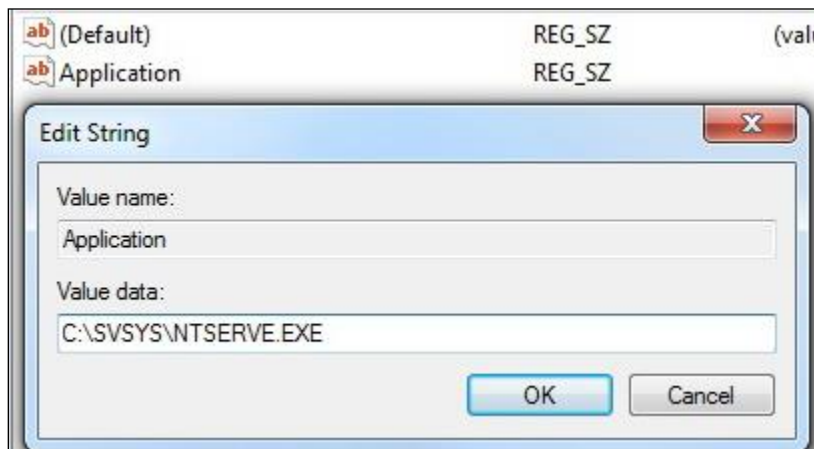
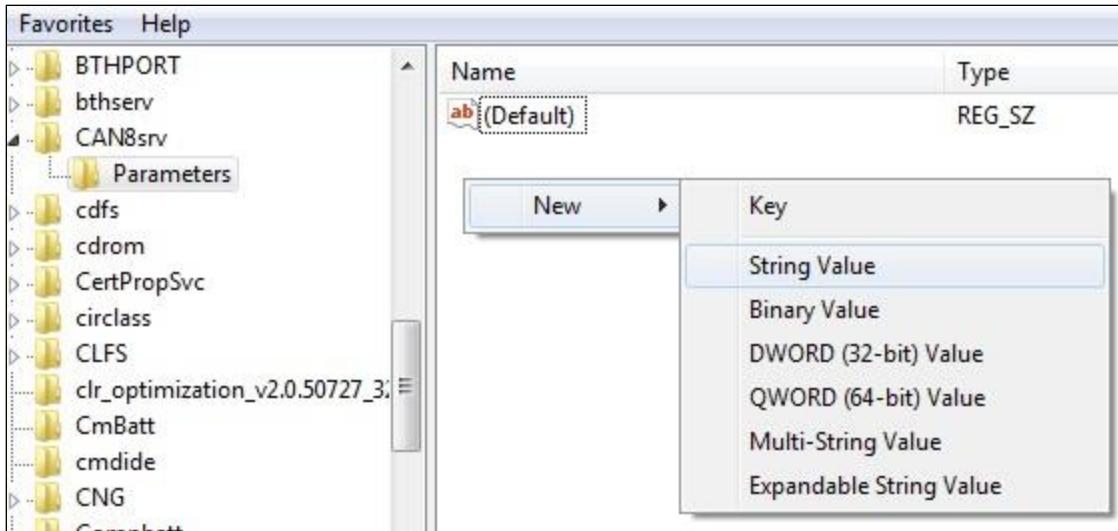
STEP 2 – Modify the parameters:

1. Exit the command prompt and then open the Registry Editor
START->RUN->REGEDIT.EXE
2. Under
KEY_LOCAL_MACHINE\SYSTEM\CurrentControlSet\Services\CAN8srv: create a '**Parameters**' key



3. In the 'Parameters' key, create an “**Application**” string value of type REG_SZ and specify there the full path of your application executable (including the extension).

For example: C:\SVSYS\NTSERVE.exe



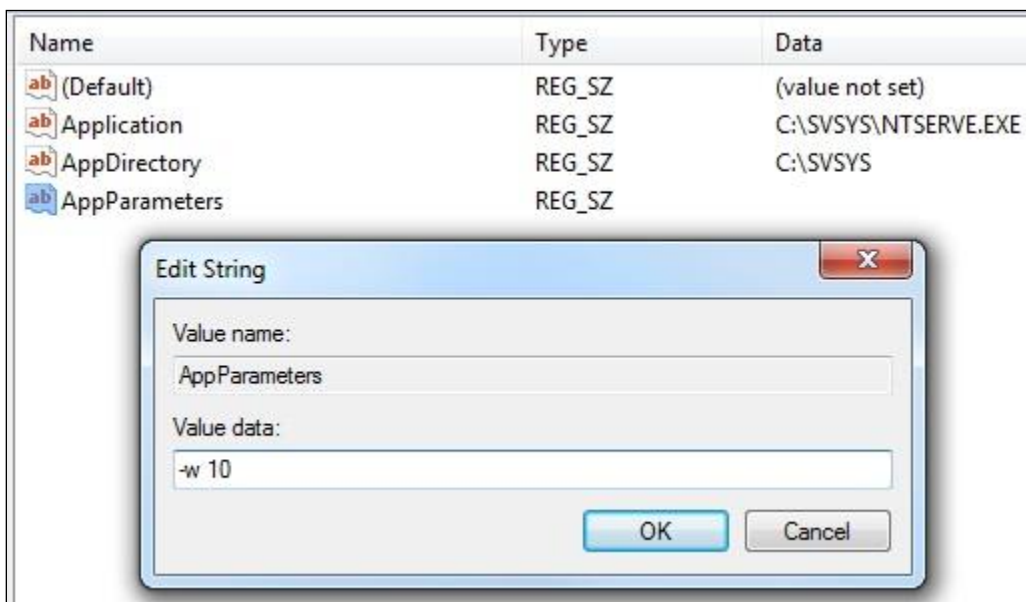
4. In the 'Parameters' key, create an “AppDirectory” string value of type REG_SZ and specify the parameters for your application directory.

For Example: C:\Svsys



- Because Microsoft delays the start of certain driver processes on their Windows server products at startup, the drivers for the serial port may not be completely initialized by the time the service control manager starts the CAN-8 service. If such is the case, the CAN-8 application will be unable to communicate with the authorization device and the service will fail.

To prevent this, in the 'Parameters' key, create an '**AppParameters**' string value of type REG_SZ and add the following string: `-w 10`

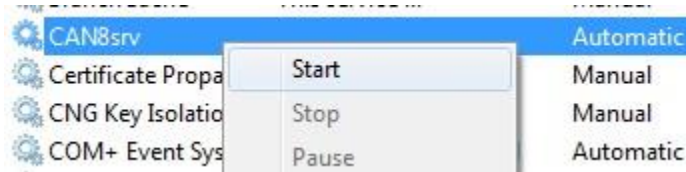


This will force the NTSERVE program to wait 10 seconds prior to attempting communication with any other device on the server.

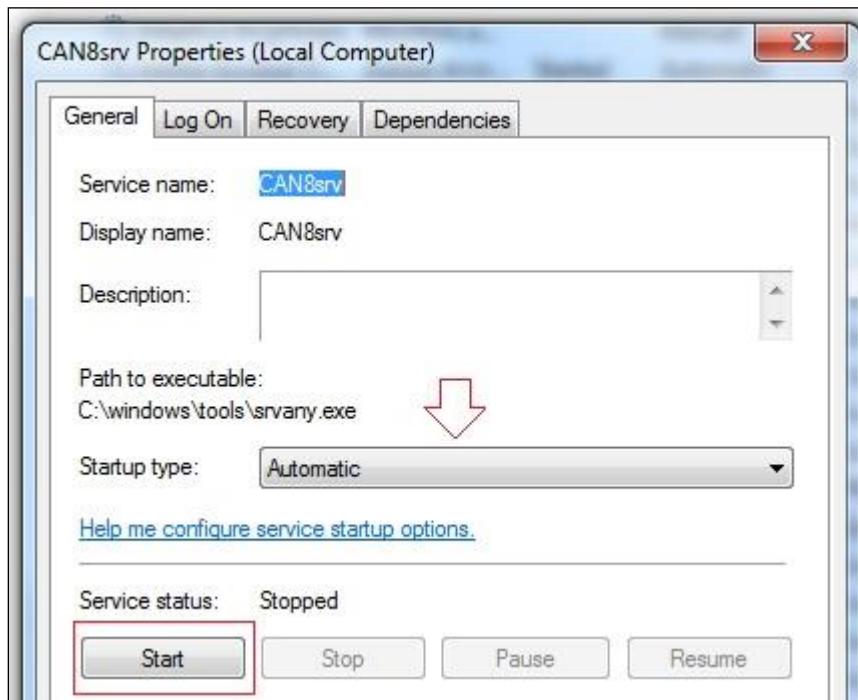
Once the parameters have been successfully modified the service must be started.

STEP 3 – Starting the CAN-8 service:

1. Open the service console
2. Control Panel -> Administrative Tools -> Services
3. Select CAN8srv in the list of services.
4. Right click and select start.



5. If the service is not set to “automatic”, right click on the service name, and then select properties,
6. You can change the startup type as illustrated below.



This concludes this procedure. If you have any question or need assistance at any point during the installation, please contact us at support@can8.com